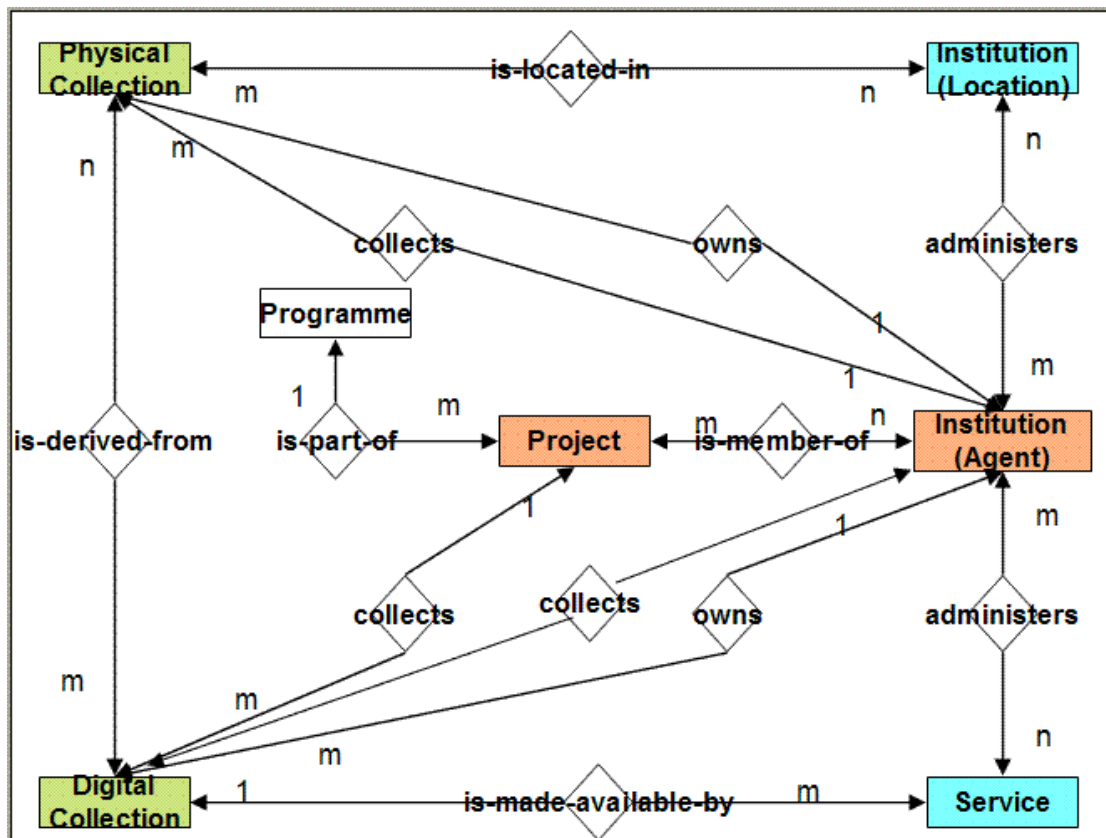


Mapping from Michael data model to RSLP CD Schema

Version 1.1, January 2005

Author: Pete Johnson, UKOLN

Contributor: Kate Fernie, MLA



<i>Michael Entity Type</i>	<i>RSLP CD Class</i>
Digital Collection	dcmitype:Collection
Physical Collection	dcmitype:Collection
Service/Product	rslp:Location
Institution (Agent)	rslp:Agent
Institution (Location)	rslp:Location
Project/Programme	rslp:Agent

Locations and Agents

In the Michael data model, the Institution entity is an Agent (i.e. it can be the owner, creator of a Collection or the administrator of a Service). However it is also used as the location of a physical collection.

The RSLP CD schema distinguishes Agent and Location as distinct entity types. The object of an `rslp:hasLocation` property is a Location, not an Agent; and the object of a `rslp:owner` property is an Agent, not a Location. So the mapping to RSLP CD Schema must treat Institution-as-Agent as a separate resource from Institution-as-Location.

Locations and Services

The RSLP CD schema does not model Service as a distinct entity type from Location, so the mapping treats both Service/Product and Institution (Location) as instances of `rslp:Location`.

Programmes, Projects and Agents

In the Michael data model, Programmes/Projects can be the owners or collectors of a Collection and thus they correspond to Agents in the RSLP CD Schema.

Entities

Digital Collection

RSLP CD Class: `dcmitype:Collection`

Attributes

Michael Field	RSLP CD Property	Notes
identifier	dc:identifier	
title	dc:title	
description	dc:description	
language	dc:language	
digital-format	dc:format	
digital-type	dc:type where terms = rslp:Collection.Type	This is a sub-type of the dc:type element, where the type of resource = collection and will draw terminology from the rslp collection type list. This allows us to record that the resource is a collection of items that are images, texts etc.
original-format digital-type-specific	michael:Collection.Type	This element allows us to record the specific type of items in the collection, ie images with the type map, musical notation etc. It will use a terminology list that is specific to the MICHAEL system.
size	dc:format	
accrual	rslp:accrualStatus	
standards		
related database	rslp:hasDescription	
legal status	rslp:legalstatus	
category	dc:subject	
subject	dc:subject	
spatial-coverage	dcterms:spatial	
famous people	rslp:agentName	
famous event	dc:subject	

Draft mapping from Michael to RSLP CD Schema

famous place	dc:subject	
famous object	rslp:objectName	
culture	dc:subject	
temporal-coverage	dcterms:temporal	
period	dcterms:temporal	
start-date	dcterms:temporal	
end-date	dcterms:temporal	
access control	rslp:accessControl	
illustration	dcterms:hasPart	This implies that the illustration is part of the subject collection.

Relations between Digital Collection and Other Entities

<i>Subject Entity</i>	<i>Relation</i>	<i>Object Entity</i>	<i>RSLP CD Property</i>
Digital Collection	is-owned-by	Institution (Agent)	rslp:owner
Digital Collection	is-collected-by	Institution (Agent)	dc:creator
Digital Collection	is-collected-by	Project	dc:creator
Digital Collection	is-made-available-by	Service/Product	rslp:hasLocation
Digital Collection	is-derived-from	Physical collection	
Digital Collection	is-part-of	Digital Collection	dcterms:isPartOf

Physical Collection

RSLP CD Class: dcmitype:Collection

Attributes

Michael Field	RSLP CD Property	Notes
identifier	dc:identifier	
title	dc:title	
description	dc:description	
language	dc:language	
physical-format	dc:format	
size	dc:format	
accrual	rslp:accrualStatus	
standards		

Relations between Physical Collection and Other Entities

Subject Entity	Relation	Object Entity	RSLP CD Property
Physical Collection	is-owned-by	Institution (Agent)	rslp:owner
Physical Collection	is-collected-by	Institution (Agent)	dc:creator
Physical Collection	is-located-at	Institution (Location)	rslp:hasLocation

Service/ProductRSLP CD Class: `rslp:Location`**Attributes**

Michael Field	RSLP CD Property	Notes
identifier	dc:identifier	
title	dc:title	
description	dc:description	
language		
maintainance		
audience		
legal status		
access type		
accessibility		
WAI		
access conditions	rslp:accessConditions	
technical requirements		
technical description	rslp:seeAlso	
protocol		
access-location/description		
access-location/locator	rslp:locator	

Relations between Service/Product and Other Entities

Subject Entity	Relation	Object Entity	RSLP CD Property
Service/Product	is-administered-by	Institution (Agent)	rslp:administrator
Service/Product	makes-available	Digital Collection	rslp:isLocationOf

Institution

The RSLP CD schema distinguishes Agent and Location as distinct entity types/classes. The Michael Institution entity type incorporates some attributes of each, so a mapping to RSLP CD generates both a Location description and an Agent description.

Institution (Agent)

RSLP CD Class: `rslp:Agent`

Attributes

Michael Field	RSLP CD Property	Notes
logo		
name	<code>vcard:fn</code>	
acronym		
jurisdiction		
institution type		
administrative status		
telephone	<code>vcard:voice</code>	
fax	<code>vcard:fax</code>	
email	<code>vcard:email</code>	

Institution (Location)

RSLP CD Class: `rslp:Location`

Attributes

Michael Field	RSLP CD Property	Notes
name	<code>dc:title</code>	
address/street	<code>rslp:address</code>	
address/pobox	<code>rslp:address</code>	
address/locality	<code>rslp:address</code>	
address/region	<code>rslp:address</code>	
address/country	<code>rslp:country</code>	
address/postcode	<code>rslp:postcode</code>	
URL	<code>rslp:seeAlso</code>	

Project/Programme

RSLP CD Class: *rsIp:Agent*

Attributes

<i>Michael Field</i>	<i>RSLP CD Property</i>	<i>Notes</i>
identifier	dc:identifier	
logo		
title	vcard:fn	
acronym		
description		
digitisation process		
funding		
email	vcard:email	
URL		
start-date		
completion-date		
project status		

References

DCMI Metadata Terms, <http://uk.dublincore.org/documents/dcmi-terms/>

RSLP Collection Description Schema. <http://www.ukoln.ac.uk/metadata/rsIp/schema/>